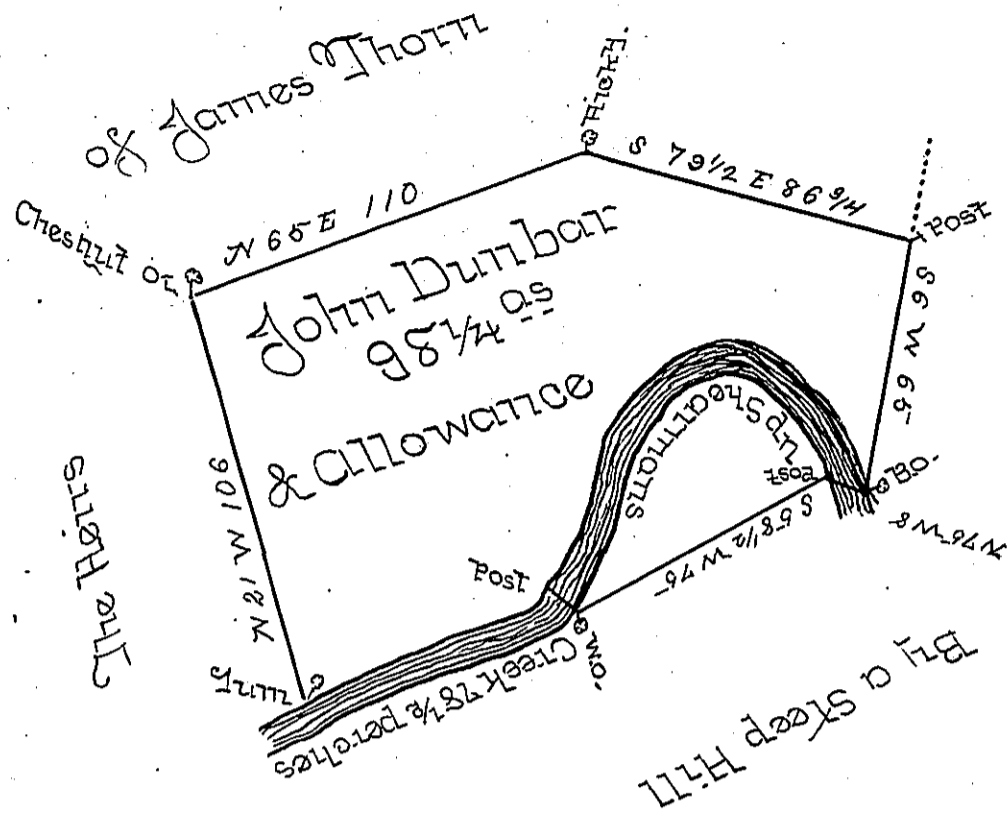


Courses & Distances
across and up the
Creek from the wo.

N 65 W 8
S 52 W 12
S 67 W 30 1/2
S 61 W 28
78 1/2



The Draught of a Tract of Land situate in Tyrone Town-
ship Cumberland County containing Ninety eight Acres
and a Quarter and Allowance of six Percent for Roads &c
Surveyed May 18th 1791 in Pursuance of a Warrant to
John Dunbar Dated April 22nd 1763 -

N.B. This Survey is Disputed }
by the Heirs of James Thott }
To Daniel Brodhead Esq }
Surveyor General }
P Saml. Lyon D.S.

IN TESTIMONY that the above is a copy of the original remaining on file in the
Department of Internal Affairs of Pennsylvania, made con-
formably to an Act of Assembly approved the 16th day of
February, 1833, I have hereunto set my Hand and caused
the Seal of said Department to be affixed at Harrisburg, this
—seventh— day of —September— 1897

James M. Patton
Secretary of Internal Affairs.